

12. September 2024

## **AMATEURE / MASTERS**

### **INFORMATIONEN ZU WM & EM GRAVEL 2024**

Wer sich international messen möchte, hat bei EM (keine Qualifikation erforderlich) und WM (Qualifikation erforderlich) noch die Möglichkeit dazu.

#### **Gravel WM**

Informationen zum Event sind unter folgendem Link aufrufbar:

<https://gravelchampionshipsflanders.com/en/>

#### **Gravel EM**

Informationen zum Event sind unter folgendem Link aufrufbar:

<https://www.asiagogravel2024.com/en/2024-uec-gravel-european-championships/>

Auf den nachfolgenden Seiten ist der Technical Guide (Stand. 7.9.2024) zu finden.

Alfred Lechnitz ist bei der EM aus heutiger Sicht dabei und wird, wenn gewünscht, wie bei der Granfondo WM in Aalborg (DK), wieder eine „Gravel EM“ WhatsApp Gruppe erstellen. Bei Interesse bitte um direkte Kontaktaufnahme mit ihm.

Für die Gravel WM ist aktuell keine WhatsApp-Gruppe vorhanden, gerne kann aber ein:e WM-Teilnehmer:in sich um eine WhatsApp Gruppe kümmern.

## **KONTAKT**

**Alfred LECHNITZ**

**Amateur / Masters Referent**

**m:** +43 676 6318009

**t:** +43 1 768 16 91

**e:** lechnitz.alfred@aon.at

**Österreichischer Radsport-Verband**

+43 1 7681691

Gadnergasse 69 / Top 05, 1110 Wien

[office@radsportverband.at](mailto:office@radsportverband.at)

ZVR: 322 411 050

 @cyclingaustria

 Cycling Austria

 [www.radsportverband.at](http://www.radsportverband.at)



# **2024 UEC GRAVEL EUROPEAN CHAMPIONSHIPS**

## **Elite – Masters**

**Asiago (ITA)**

**13 October 2024**

# **TECHNICAL GUIDE**

*as of 7.9.2024*

## CONTENT

<b>1. OFFICIAL REPRESENTATIVES</b> .....	<b>3</b>
1.1. Local Organising Committee (LOC) .....	3
1.2. UEC Representatives.....	3
1.3. Commissaires panel .....	3
1.4. Time Keeping .....	3
1.5. Official announcers .....	3
<b>2. GENERAL INFORMATION</b> .....	<b>4</b>
2.1. Travel and Accommodation .....	4
2.2. Visas.....	4
2.3. Address of the competition venue.....	4
2.4. Accommodation.....	4
2.5. Parking area.....	5
2.8. Medical – Emergency .....	5
<b>3. TEAM SERVICES</b> .....	<b>6</b>
3.1. Permanence .....	6
3.3. Commissaires panel meeting .....	6
3.4. Confirmation of starters / License check.....	6
3.5. Team managers' meeting / Briefing participants .....	6
<b>4. MEDIA</b> .....	<b>7</b>
4.1. Media Centre.....	7
4.2. Interview zone .....	7
<b>5. PROGRAMME</b> .....	<b>8</b>
5.1. Competition schedule .....	8
5.2. Award ceremonies .....	8
5.3. Distances .....	9
<b>6. EVENT SPECIFIC REGULATIONS</b> .....	<b>10</b>
6.1. General rules.....	10
6.2. Events regulations .....	11
6.3. Awards .....	15
6.4. Antidoping .....	15
6.5. Penalties .....	15
6.6. Responsibilities.....	15
<b>7. APPENDICES</b> .....	<b>16</b>
7.1. Course details .....	16
7.2. Start set up.....	17

## 1. OFFICIAL REPRESENTATIVES

---

### 1.1. LOCAL ORGANISING COMMITTEE (LOC)

Organising Committee : Via Galileo Galilei, 63 – 36066 SANDRIGO (VI)  
Contact information. [info@asiagogravel2024.com](mailto:info@asiagogravel2024.com) + 39 331 126 8115  
Media : [info@asiagogravel2024.com](mailto:info@asiagogravel2024.com)  
Technical / sport [info@asiagogravel2024.com](mailto:info@asiagogravel2024.com) +32 497 720 815  
Event website : <https://www.asiagogravel2024.com/>

### 1.2. UEC REPRESENTATIVES

UEC Management Board	Enrico Della Casa (SUI) Delmino Pereira (POR) Henrik Jess Jensen (DEN) Katarina Jakubova (SVK) Dragomir Kouzov (BUL)	President Vice President Vice President Member Member
UEC General Secretary	Alasdair MacLennan (GBR)	
UEC Sport Adviser	Jos Smets (BEL)	
UEC Sports Coordinator	Vladimiro Petsas (GRE)	
UEC Events Coordinator	Tiziana Lardieri (SUI)	
UEC Press Officer	Stefano Bertolotti (ITA)	
UEC Photographer	Tommaso Pelgalli (ITA)	
UEC Video producer	Christian Bohm (ITA)	

### 1.3. COMPOSITION OF THE COMMISSAIRES PANEL

President of the Commissaires Panel **tbc by UCI**  
National commissaires: **tbc**

### 1.4. TIMEKEEPING

Official timekeeper Evodata – Timing & Data Solution

Elite riders do not have to pay a deposit for their chip.

All age-group riders must pay a € 20 deposit for their timing chip. If paying by credit card, the amount will simply be reserved on the card until the chip is returned after the finish. The refund may take a few days, and depending on the bank there may also be bank charges.

### 1.5. OFFICIAL ANNOUNCER

**To be confirmed**

## 2. GENERAL INFORMATION

---

### 2.1. TRAVEL AND ACCOMMODATION

The 2024 UEC **Gravel** European Championships will be hosted at Omnisport in **Asiago (ITA)**.

**Nearest airport:**

Treviso Airport – 86 km away / Venice Marco Polo Airport – 116 km away

**Public transportation:**

By Car: from the highway A4 Serenissima (Milan-Venice): when you are approaching the Vicenza East exit, change to the highway A31 Valdastico until Piovene Rocchette exit. From there choose the road "Costo SP 349" and follow the directions to Asiago.

If you arrive from Austria, take the highway A22 Brennero in direction to Bolzano and take the exit "Trento sud", and from there you can follow for Lavarone and the Vezena Plateau.

By train: there are trains from Milan and from Venice in direction Vicenza. You can also take the train until Thiene or Bassano del Grappa and there you can find the bus to Asiago.

By bus: there are daily busses from Vicenza, Padova, Bassano del Grappa and Thiene.

There are also daily connections from Milan by highway, but only during high season. Please remember, that in this case the bus can only transfer a limited number of passengers.

All participants must hold a valid passport or identity card.

### 2.2. VISA

Each Federation is responsible for obtaining documents for their delegation appropriate entries. Here you can find an overview of countries that require a visa:

<https://www.italia.it/en/italy/practical-information/travel-document-italy>

For all invitation letter requests please contact the UEC: [mail@uec.ch](mailto:mail@uec.ch)

All riders and attendants must hold insurance valid in Italy.

### 2.3. ADDRESS OF THE COMPETITION VENUE

Start location: Piazza Il Risorgimento – Coordinate 45,87573° N, 11,50908° E

Finish location: Piazza Il Risorgimento – Coordinate 45,87573° N, 11,50908° E

**Link of the location:**

[https://www.google.com/maps/d/u/0/edit?mid=12XO\\_o4P00eXYvJT7MV0fpWmqST9FmxU&usp=sharing](https://www.google.com/maps/d/u/0/edit?mid=12XO_o4P00eXYvJT7MV0fpWmqST9FmxU&usp=sharing)

### 2.4. ACCOMMODATION

If you need accommodation arrangements please contact:

"Asiago Turismo Office"

Phone: +39 0424 462221

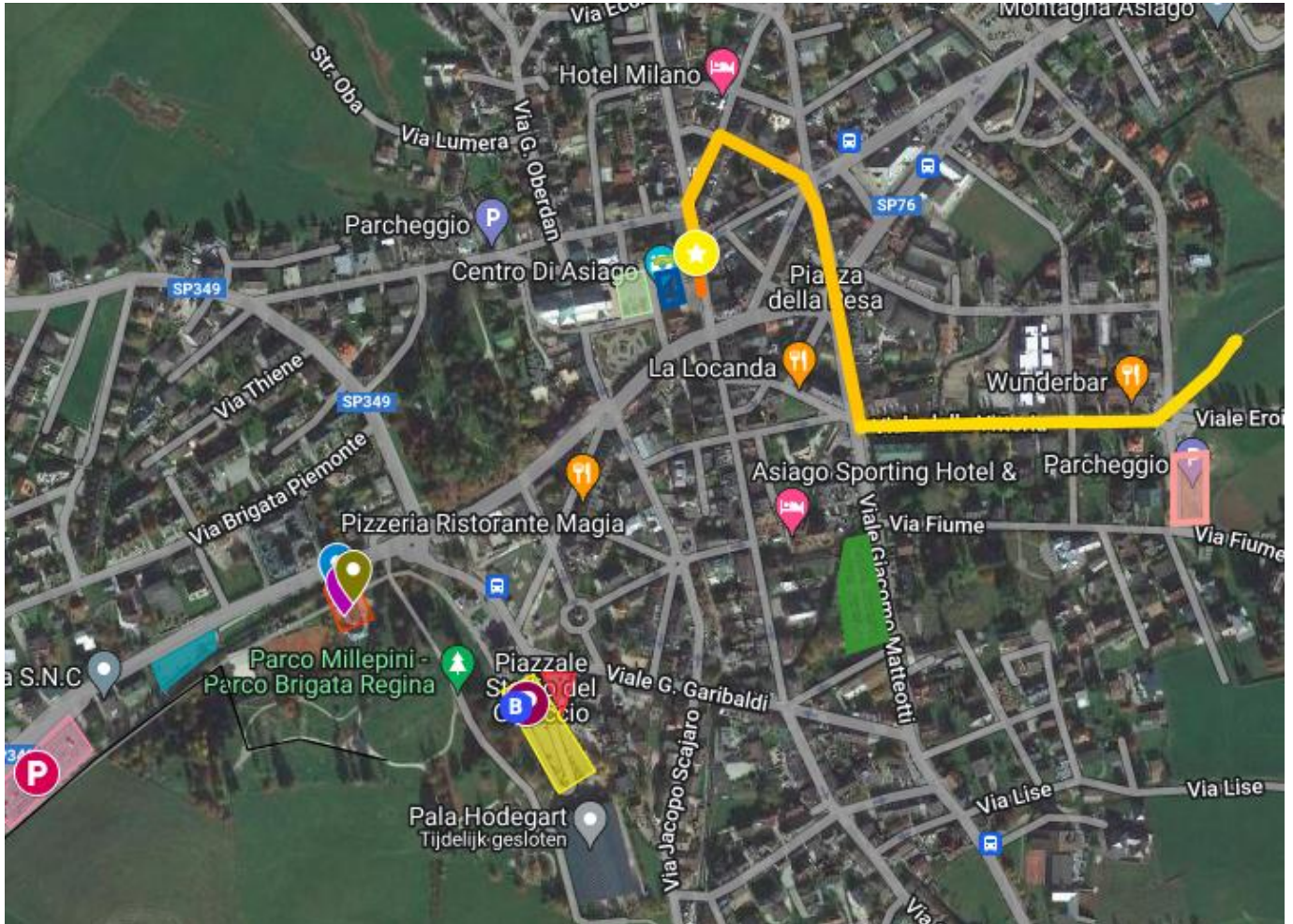
E-mail: [info@asiago.to](mailto:info@asiago.to)

E-mail: [asiagoturismo@comune.asiago.vi.it](mailto:asiagoturismo@comune.asiago.vi.it)

Website: <https://asiago.to/IT/ospitalita.aspx?idCategoria=2>

## 2.5. PARKING AREA

Officials: Piazzale Stadio del Ghiaccio 32  
 Elite teams: Parcheggio Via Giuseppe Verdi 59  
 Individual riders: Parcheggio Via Giuseppe Verdi 59  
 Spectators: Parcheggio Via Giuseppe Verdi 59



## 2.6. MEDICAL – EMERGENCY

General emergency number: 112  
 Police: 113  
 Number in the event of irreparable damage or non-urgent help: +39 331 126 8115  
 Nearest hospitals: Asiago Hospital (+39 0424 604111) / San Bassiano Hospital (+39 0424 888111)  
 Medical team: **Number of the doctor or medical coordinator ( tbc)**

### 3. TEAM SERVICES

---

#### 3.1. PERMANENCE / RACE OFFICE

Location: Municipio Piazza II Risogimento 6  
Opening hours: Saturday, 12 October 2024 13:00 – 19:00  
Sunday, 13 October 2024 08:00 – 18:00

This is where important event information can be found: car parking, credentials, messages, lost property, etc..

#### 3.2. COMMISSAIRES PANEL MEETING

Date: Saturday, 12 October 2024  
Time: 11:00  
Location: Viale della Stazione 7 36012 Asiago

#### 3.3. CONFIRMATION OF STARTERS / LICENSE CHECK

Date & Time: Saturday, 12 October 2024 13:00 until 18:00  
Sunday, 13 October 2024 08:00 until 10:00  
Location: Viale della Stazione 7 36012 Asiago

#### 3.4. TEAM MANAGERS MEETING / BRIEFING PARTICIPANTS

Date: Saturday, 12 October 2024  
Time: 18:00  
Location: Viale della Stazione 7 36012 Asiago

## 4. MEDIA

---

### 4.1. MEDIA CENTRE

Media centre location: Viale della Stazione 7 36012 Asiago

Opening hours: Saturday, 12 October 14:00 – 18:00  
Sunday, 13 October 10:00 – 19:00

In order to access the Media Centre an accreditation is necessary. To apply for media accreditation, please visit the UEC website [www.uec.ch](http://www.uec.ch)

Media accreditation and photographers' bib's can be collected at the permanence.

€50/CHF 50 will be requested for the bib as deposit. It will be refunded when the bib will be returned.

For any further inquire please contact

Stefano Bertolotti: [s.bertolotti@uec.ch](mailto:s.bertolotti@uec.ch)

Carlo Malvestio, Organisation Press Officer: [press@ppsportevents.com](mailto:press@ppsportevents.com)

### 4.2. INTERVIEW ZONE

Next to the Awards Ceremony podium, a flash interview zone will be organised open for the media.



## 5. PROGRAMME

### 5.1. COMPETITION SCHEDULE

#### Saturday, 12 October 2024

13:00-18:00 Race Registrations / confirmation of starters  
18:00 Team Managers`meeting / Briefing

#### Sunday 13 October 2024

##### Elite races starts

12:00 MEN ELITE  
12:10 WOMEN ELITE

##### Age groups starts

12:02 Men 19-34  
12:04 Men Masters 35-39  
12:05 Men Masters 40-44  
12:06 Men Masters 45-49  
12:07 Men Masters 50-54  
  
12:11 Women 19-34 / Women Masters 35-39 / 40-44 / 45-49 / 50-54  
12:12 Men Masters 55-59 / 60-64  
12:13 Men Masters 65+  
12:14 Women Masters 55+

Age group starts might be combined or split depending on the number of participants.

### 5.2. AWARD CEREMONIES

Will proceed immediately after the finish, the times and order below are purely indicative.

14:00	Men Masters 55-59	15:20	Men Masters 45-49
14:05	Men Masters 60-64	15:25	Men Masters 50-54
14:10	Men Masters 65-69	15:30	Women Elite
14:15	Men Masters 70-74	15:35	Women 19-34
14:20	Women Masters 55-59	15:40	Women Masters 35-39
14:25	Women Masters 60-64	15:45	Women Masters 40-44
		15:50	Women Masters 45-49
		15:55	Women Masters 50-54
14:45	Men Masters 75+	16:30	Men Elite
14:50	Women Masters 65-69	16:35	Men 19-34
14:55	Women Masters 70-74	16:40	Men Masters 35-39
15:00	Women Masters 75+	16:45	Men Masters 40-44

The numbers and names of the riders for the award ceremonies will be posted in the finish area. The riders are requested to make their way to the podium immediately after their finish.

**5.3. DISTANCES**

<b>MEN ELITE</b>	3 laps	153 km
Men 19-34	3 laps	153 km
Men 35-39	3 laps	153 km
Men 40-44	3 laps	153 km
Men 45-49	2 laps	102 km
Men 50-54	2 laps	102 km
<b>WOMEN ELITE</b>	2 laps	102 km
Women 19-34 / 35-39 / 40-44 / 45-49 / 50-54	2 laps	102 km
Men 55-59 / 60-64	1 lap	51 km
Men 65-69 / 70-74 / 75+	1 lap	51 km
Women 55-59 / 60-64 / 65-69 / 70-74 / 75+	1 lap	51 km

## 6. EVENT SPECIFIC REGULATIONS

### 6.1. ARTICLE 1 - GENERAL RULES

#### 1.1 REQUIRED LICENSES

Riders who participate in the UEC Gravel European Championships must hold a valid licence from their respective national federation (day licences are excluded), must hold a UCI-ID and must be adequately insured against accidents and civil liability in the country where the UEC Gravel European Championships are held.

Only riders having a European nationality and holding one of the following licenses with a valid UCI-ID can take part in the UEC European championships

- Elite license
  - UCI teams: mandatory in elite race
  - Club teams: option between elite race or age groups
- Masters license: only in the age group starts
- Amateur license: only in the age group starts
- Cycling for all license: only in the age group starts

#### Accident and third-party liability insurance

Each rider is responsible for ensuring that they possess appropriate medical and third-party liability insurance. This can be ensured through a race license (from a National Federation affiliated to the UCI) covering races abroad.

#### 1.2 REGISTRATIONS

National Federation riders and Individual riders (Elite + Masters) can register via :

<https://uec.evodata.it/landing/index.php>

Deadline for registration and payment: **Wednesday, 9 October at 24:00**

Entry on the day is not available.

#### 1.3 REGISTRATIONS FEE

Elite category: free registration

Age group registration: € 95

#### 1.4 CATEGORIES

##### Elite category

Riders part of a UCI registered team must always race in the Elite category (UCI World tour team, UCI Pro team, UCI Continental team, UCI Mountain Bike Team, UCI Cyclocross team, UCI Track team). Their name should appear in this overview: <https://www.uci.org/riders/road-riders-teams/4uEfOErsvL4hkRJriqkdiw>

Elite riders who are not part of a UCI registered team but have an elite license have the choice of starting in the elite category or in their respective age category, but they must make that choice.

Any rider who has a Masters license should always take part in the age groups categories.

##### Age categories

The UEC Gravel European championships are also organised in the age group 19-34 and further 5-year age-groups: 35-39, 40-44, 45-49, 50-54, 55-59, 60-64, 65-69; 70-74, 75-79, etc.

Age groups are defined by the rider's age on 31 December of the year of the European Championship.

All age groups will have their own title regardless of the number of riders who have taken part in the race in the relevant age groups.

## 1.5 MATERIAL AND EQUIPMENT

### Bikes

UCI article 15.6.005: Any style of bike shall be permitted as long as this bike has dropped handlebars but e-bikes, tandem, recumbent bikes and time trial road bikes are forbidden.

Handlebars can be of any shape but must be of a one-piece construction with no bar ends or clip-on extensions allowed (triathlon handlebars and any other handlebars extension system are forbidden).

The bike should be minimum 6.8kg (without bottles, GPS device) as per UCI regulations.

There is no minimum or maximum tyre width.

### Mandatory helmet

The UEC takes a very hard stance on the use of helmets in competition. Wearing a helmet is mandatory for all competitions, throughout the whole race. Participants are informed in advance by the organization that they will be barred from the start or that their race number will immediately be withdrawn if they are caught by a member of the organization without their helmet.

### Jersey

All riders are free to ride in their national, team or club jersey.

Reigning World Champions should wear their rainbow jersey.

## 1.6 UNFORESEEN

In those events in which the regulations do not specify, the commissaires panel, in conjunction with the UEC Technical Delegate and the organization (where applicable), will decide.

## 6.2. ARTICLE 2 - EVENTS REGULATIONS

### 1.1 COURSES

Gravel discipline is a form of cycling that combines elements of both road and mountain-bike disciplines and consisting mostly of distance riding over unpaved roads.

Gravel events shall have the following course characteristics:

- Gravel races shall take place on any type of unsurfaced roads and can include gravel, forest fire-roads, farm roads and tracks and cobbles.
- Tarmac surfaced roads should not total more than 40% (forty percent) of the race distance.
- The course should avoid grass and meadows.
- Singletrack sections should be kept to a minimum and only be included in the course where required to link other sections and only where an alternative route for essential event vehicles (for example medical services) is available.

Course distances should be a minimum of 50 km and a maximum of 200 km, considering course difficulty and elevation gain. Race organisers can propose a shorter distance for older age categories. There shall only be one official distance per age category per event.

### 1.2 SIGNPOSTING

Signposting is very important to allow those involved in the Championships to find their way around the competition venue easily.

Signposting must be put in place by the Tuesday at the latest to assist the various groups of people arriving at the Championships.

All signposting bears the logo of the Championships. This reinforces the visual identity of the event.

Signs are written in the language of the host country and English.

Clear and accurate signposting is used at regular intervals, both outside the venue of the Championships (from the host town) as well as inside the site.

### 1.3 DISPLAY PANELS

In addition to standard signs warning participants about dangers along the course or indicating the direction to follow, specific panels must also be installed on both sides of the road as follows:

- Panels must be placed to indicate the last 50km, 25km, 10km, 5km, 1km, and 500m before the finish line.
- The presence of the next feed zone must be indicated 500m ahead of each zone
- All the technical characteristics of the climbs must be indicated at the bottom of all climbs; this includes: the average and maximum gradients and the length of the climb.

### 1.4 STARTING PROCEDURE

Riders are placed in start boxes at the starting line, in accordance with their starting order and per start group. The entrance to each box must be placed at the back of each box, with riders entering from the side.

#### Elite start

The Elite start will be organised based on a points system that is a cumulation of the following points.

- Points won during the UEC Gravel European Championship of the previous year in the elite category top 25: 1000-750-600-500-450-400-350-300-275-250-225-200-180-160-140-120-100-80-70-60-50-40-30-20-10 points
- 50% of the points in the UCI rankings road, mountain bike cross country (XCO), mountain bike marathon (XCM) and cyclocross

#### Start age groups and masters

Riders of the age groups (19-34 and all masters) will be positioned on a first come, first serve base.

The start boxes must be separated by tape or fences which may be removed a few minutes before the respective starts. After removal of the tape/fence, the next start group can move to the front to be aligned at the start line.

The start time for all riders in a same start group is the gun-time of that specific group, and not the moment each rider crosses the start mat.

The signs to indicate the start boxes for each category must be installed the day prior to the race to allow riders to understand where they need to be the following day.

Different age groups start at different start times in the race. If age groups merge, they can ride together. The only exception in which a commissaire will interfere is when a rider specifically waits to help another rider in a later start group.

### 1.5 LAPPED RIDERS

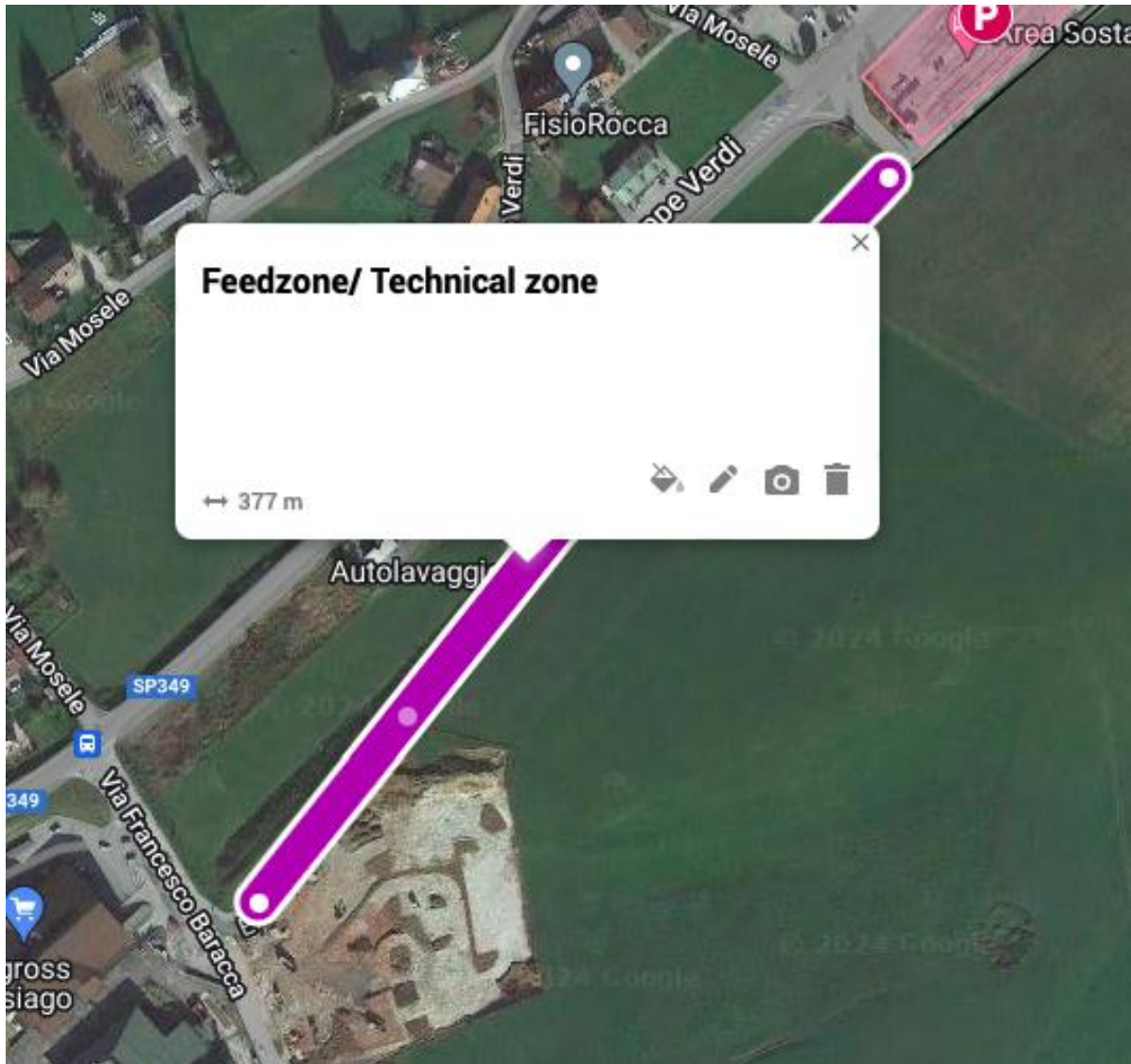
Riders who are lapped may continue the race until they pass the finish line.

## 1.6 FEED ZONES – TECHNICAL ZONES

**Feed and Tech zones location:** Ex Ferrovia Rocchette-Asiago, 36012 Asiago VI

In this point, (national) teams and helpers of participants can serve food/drinks and can give mechanical support.

All riders should bring their own tools and spare tire or tubular to the race.



### Technical assistance

Mechanical assistance is not provided. Riders are advised to bring their own spare tire or tubular to the race.

It's possible to change wheels in the feed zones/pit.

It's allowed to have mechanical help during the event and change wheels, but a bike change is not allowed. The rider must finish with the same bike frame he used at the start.

## 1.7 WASTE - LITTERING

Taking food and drinks from a helper or the organisation is only possible in the designated feed and tech zones. Also throwing away drinking bottles or gels/bars is only allowed in these zones (clearly indicated with a sign indicating the start and end of these zones).

We cannot stress enough that the correct use of the forest paths and roads is important for the organisation of this European Championship.

Let's respect nature in this vulnerable part of our country. **Littering or taking bottles or food outside these zones means disqualification from the race.**

### 1.8 METRIC SIGNBOARDING

All signage on the UEC European Championships course must be installed at the latest on the Monday before the event to allow riders to train on the course. It is the organisers' responsibility to ensure the necessary authorisations are obtained to place these signs. A check of all signage must be undertaken the morning of the Gravel race in order to replace signs which may have been removed.

The course must be signposted to a very high standard.

The direction arrows should not leave any doubt about the direction to follow. Each course is signposted several days before the start of competition. The signposting must be checked by the Organising Committee every morning before official training and competitions.

As well as signage, where necessary the LOC should provide Marshalls with a yellow flag and a whistle to be positioned at an appropriate distance before hazards to prevent incidents.

### 1.9 GPS DEVICE

The organiser should provide all participants with the GPX file of the course so it can be downloaded to a GPS device as backup to follow the courses.

### 1.10 SAFETY

All dangerous points must be protected (traffic islands, central reservations, bends, etc.) by straw bales (wrapped in plastic), mattresses or other appropriate safety padding.

Radio or mobile telephone links: Radio or mobile telephone support is essential during the event. The organisation will therefore put in place a system which permits rapid and efficient communication between the people involved in the organisation. For the well-being of the cyclists, their families and also the marshals spread out over the race, an emergency number will be available (and made public) throughout the event.

### 1.11 TIMING

The event is timed for all the participants, for the entire length of the course.

The timekeeping provider will produce an overall ranking per age group and gender with a separate elite title for the elite category.

The timing of the event starts with the gun, and not when each individual rider crosses the starting carpet (GUN time principle).

Organisers must use the official UCI names of the age groups in their communication and official results: ME (men elite), Men 19-34, Men Masters 35-39, Men Masters 40-44, Men Masters 45-49, Men Masters 50-54, Men Masters 55-59, Men Masters 60-64, Men Masters 65-69, Men Masters 70-74, Men Masters 75  
Same principle for the Women.

### 6.3. ARTICLE 3 - AWARDS

#### Jersey and medals

Every European Championship will be awarded for:

The 1<sup>st</sup> place: Champion(s) jersey and Gold medal

The 2<sup>nd</sup> place: Silver medal

The 3<sup>rd</sup> place: Bronze medal

Winners are obliged to be in time for the awards ceremony.

Riders must present themselves in race clothing and shall not wear a helmet, a cap a headband or glasses until they leave the podium ceremony area.

### 6.4. ARTICLE 4 - ANTIDOPING

The UCI antidoping regulations are entirely applicable to the event.

The antidoping tests will take place at Pallazo del Turismo Millepini di Asiago- Teatro Millepini ( piano primo)

The controls will be under the responsibility of the International Testing Agency (ITA).

### 6.5. ARTICLE 5 - PENALTIES

The UCI penalty scale is the only one applicable.

### 6.6. ARTICLE 6 – RESPONSABILITIES

The organizers and the UEC cannot, in any case, be held responsible in the event of accidents or material damage which may occur during official training and / or competitions.

The organizers and UEC decline all responsibilities towards the riders and others in case of an accident.

**In all cases not provided for in the specific regulations, the UCI regulations will be applicable.**



## 7. APPENDICES

### 7.1. COURSE DETAILS

The track follows the best gravel roads of the famous Altipiano di Asiago, a special place for Veneto Region thanks to his location in between the flat Pianura Veneta and the first mountain ranges.

The route starts from the centre of Asiago and with some fast but climbing sector which ride alongside the famous Sacratio Militare di Asiago of the First World War, making a lap of the beautiful Golf Club of Asiago. After a small bridge it starts the very hard sector of the race with 10 km of climbing in the middle of the forest. From the top of the climb the riders will find a nice and fast downhill returning to Asiago where the last part of the circuit enters in the small but lovely Parco Millepini to make the final km in the city of Asiago.

Start and finish are located at the Piazza Giovanni Carli.

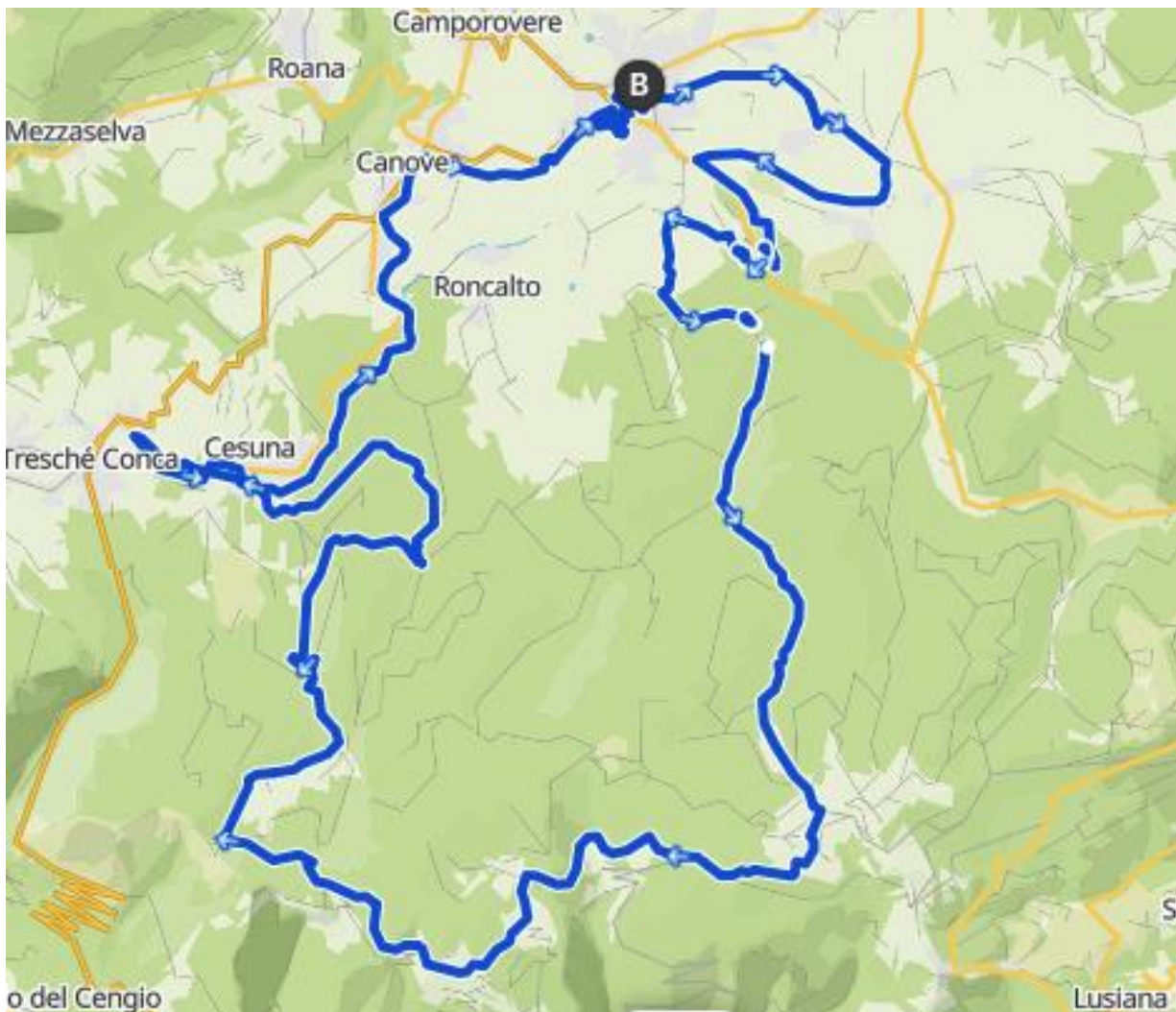
The local lap has 70% gravel and 30% paved roads and totals 720m of elevation per lap.

The start and finish are on a paved road.

#### 51 km loop ( provisional)

The final courses with online links and GPX files will be communicated 1 week before the event.

The course is designed in a beautiful nature area which we want to protect from too many visitors in the months before the event, so therefore GPX files are only published one week prior to the race.



## 7.2. START SET UP

